

# ESPRIT CAM SYSTEM FOR Citizen-Cincom

A Citizen-Cincom Machinery preferred CAM solution

Citizen-Cincom and DP Technology have collaborated technically in response to increasing demand from users who desire software that yields better production value and greater machining utilization. The result is a CAM solution that streamlines operations on the shop floor and simplifies the programming process. Citizen-Cincom and DP Technology continue ongoing development to maintain a suite of post processors and machining configurations within ESPRIT to support the full line of Citizen-Cincom machine tools.

#### The ESPRIT CAM System for Citizen-Cincom Includes:

- ESPRIT SolidTurn Production for multi-spindle and multi-turret Swiss-style turning
- SolidMillTurn Advanced for C- and Y-axis milling
- Synchronized, synchronous and independent multi-axis turning
- Full suite of machining cycles including: roughing, contouring, drilling, pocketing, grooving, facing, threading and more...
- Part handling cycles including: barfeed, rechucking, part transfer and cut-off
- Machine specific user interface for Citizen
- Factory certified post processing for Citizen
- Solid simulation and verification for Citizen
- And more as outlined in the ESPRIT General Specifications

ESPRIT includes functions specific to and customized for Citizen-Cincom Swiss-style lathes, including a custom Citizen-Cincom machine set-up interface with machine data pages for L, M, A, C, E, R, K and B-series Citizen-Cincom machine tools; a custom cutting tool interface that manages tool shifts and Citizen-Cincom tool holders; accurate machine simulation with embedded machine models and post processors for Citizen-Cincom lathes.

[dptechnology.com/citizen](http://dptechnology.com/citizen)

## CONTACT US

**DP Technology Corp.**  
**Corporate Headquarters**

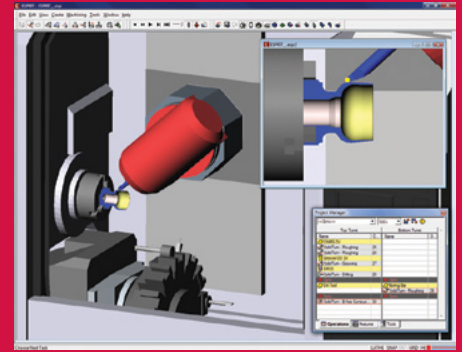
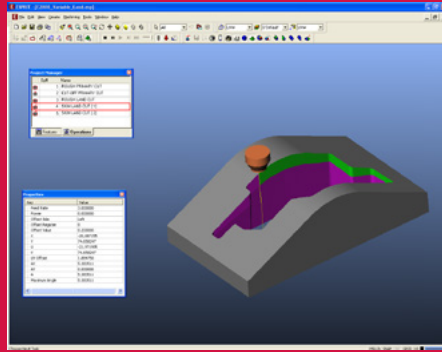
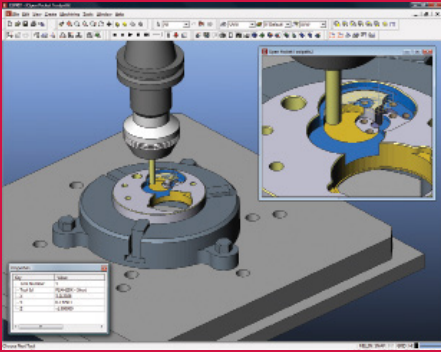
1150 Avenida Acaso  
Camarillo, CA 93012, USA  
Tel: 800 627 8479, 805 388 6000

[dptechnology.com](http://dptechnology.com)  
[esprit@dptechnology.com](mailto:esprit@dptechnology.com)

**Marubeni Citizen-Cincom Inc.**



The Right Choice



ESPRIT is a high-performance computer-aided manufacturing (CAM) system for a full range of machine tool applications.

ESPRIT's high-performance capabilities include machining any part geometry (solid, surface, or wireframe), universal post processing to format G-code for virtually any machine tool, and solid simulation and verification with dry runs rendered in dynamic solids for optimal part quality and consistency. ESPRIT is 100% pure Windows®, and provides a comfortable and familiar user interface for maximum productivity.

ESPRIT for Citizen-Cincom is a member of the ESPRIT family of CAM software which also includes powerful, full-spectrum programming for

- 2–5 axis milling\*
- 2–22 axis turning
- 2–5 axis wire EDM\*
- multitasking mill-turn machining
- B-axis machine tools\*
- High-speed 3- and 5-axis machining\*

\*Available as an upgrade to the ESPRIT for Citizen-Cincom system.

U.S. Patents 6,907,313; 7,058,472; 7,894,930. Other U.S. and foreign patents pending.

© 2013 DP Technology Corp.  
All Rights Reserved

### ESPRIT for Citizen-Cincom General Specifications

- Machining and modeling of any part geometry powered by
  - Parasolid® solid modeler
  - ACIS® solid modeler
  - NURBS surface modeler
  - STL modeler\*\*
  - 2D/3D wire frame modeler
  - Drawing, dimensioning, and annotation
- Universal post processing
  - Factory certified for Sodick
- Solid simulation and verification
  - Dry runs in dynamic solids
  - Rendered within the complete machining environment: machine tool, fixtures, stock, and workpiece
  - Exhaustive collision detection: tool, stock, fixtures, and workpiece
  - “As-machined” versus “as-designed” part inspection
- 100% pure Windows® application
  - Designed for:
    - Microsoft® Windows® Vista™ or Windows® 7™
    - Microsoft® SQL Server™
    - Integrates with Microsoft® Office for shop-floor documentation
    - Dynamic graphics delivered by OpenGL®
    - Customizable user interface, toolbars and menus
    - Online help
- Adaptive machining cycles
  - Adapts to varying part geometry
  - Automates engineering changes and part families
  - Extensive tool control
- Microsoft® Visual Basic® for Applications (VBA)
- ESPRIT Component Object Model (COM)-based Application Programming Interface (API)
- Automated Feature Recognition
- High-speed machining and G-code optimization
- G-Code text editor and DNC RS232 communication program
- Network floating licenses\*\*
- Data Exchange
  - ESPRIT reads data from the following native formats: ACIS® (SAT), AutoCAD (DWG), CSV, DXF™, Autodesk Inventor®, IGES, Mechanical Desktop®, Parasolid® (X\_B, X\_T), Solid Edge®, SolidWorks®, TXT, VDA-FS. Optional data readers are available for: CATIA®, Pro/ENGINEER®, Unigraphics®, STEP, STL.
- Local Language Support
  - Chinese (PRC), Chinese (Taiwan), Czech, English, French, German, Italian, Japanese, Korean, Polish, Spanish, Swedish, and Turkish.

Note: \*\*Optional component

[dptechnology.com/citizen](http://dptechnology.com/citizen)



The Right Choice

Los Angeles | Chicago | Charlotte | Tokyo | Shanghai | Montpellier | Florence | Nuremberg